



COMMON HUB/ROTOR/BRAKE COMBINATIONS OF THE NEW 9300 SERIES BILLET HUBS

FRONT HUB COMBINATIONS

#1

NON FLOATING 3 BOLT

BRP 9382 FRONT HUB
BRP 65W ROTOR
BRP 4588 OR BRP 9215 ADJ CAMBER SPINDLE
BRP 9390 BRAKE BRACKET
BRC 170-1526 BRAKE CALIPER

BRP 9390



#2

NON FLOATING 8 ON 7

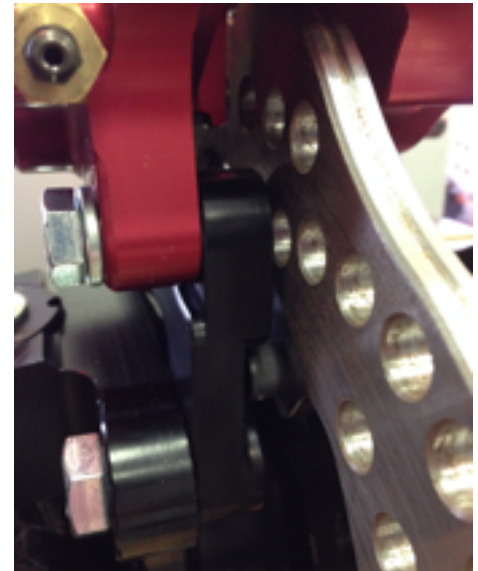
BRP 9382 FRONT HUB
BRP 67 ROTOR
BRP 4588 OR BRP 9215 ADJ CAMBER SPINDLE
BRP 9391 BRAKE BRACKET
BRP 9384 ROTOR ADAPTER
BRC 170-1526 BRAKE CALIPER

#3

FLOATING 8 ON 7

BRP 9382 FRONT HUB
BRP 67 ROTOR
BRP 4588 OR BRP 9215 ADJ CAMBER SPINDLE
BRP 9391 BRAKE BRACKET
BRP 9386 FLOATING T-NUTS
BRC 170-1526 BRAKE CALIPER

BRP 9391



REAR HUB COMBINATIONS

#1

NON FLOATING 3 BOLT CRATE OR LITE BRAKING 358

BRP 9380 REAR HUB
BRP 65W ROTOR
BRP 9389 BRAKE BRACKET
BRC 170-4088 BRAKE CALIPER FOR 3/8 ROTOR

#2

NON FLOATING 8 ON 7 5 BOLT HUB FOR BB OR HARD BRAKING 358

BRP 9383 REAR HUB
BRP 9385 ROTOR ADAPTER
YOUR CHOICE OF 8 ON 7 BRAKE ROTOR
YOUR CHOICE OF ANY CALIPER AND BRACKET THAT SUITS YOUR NEEDS

#3

FLOATING 8 ON 7 5 BOLT HUB FOR BB OR HARD BRAKING 358

BRP 9383 REAR HUB
BRP 9385 ROTOR ADAPTER
BRP 9386 FLOATING T-NUTS
YOUR CHOICE OF 8 ON 7 BRAKE ROTOR
YOUR CHOICE OF ANY CALIPER AND BRACKET THAT SUITS YOUR NEEDS



A FEW NOTES AND OPTIONS FOR YOUR HUBS

BRP 9380 HUB ONLY COMES WITH A SMALL STEEL RING IN PACKAGE. INSTALL YOUR INNER SEAL, THEN PLACE THIS STEEL RING ON TOP OF THE SEAL. WHEN YOU INSTALL THE ROTOR, THE STEEL RING WILL BE PINCHED BY THE EARS OF THE ROTOR AND PUSH DOWN ON THE SEAL TO KEEP IT IN PLACE

ALL REAR HUBS

TORQUE ALL DRIVE FLANGE NUTS TO 20 FT LBS
MAKE SURE TO CHECK THEM REGULARLY

ALL HUBS

IF USING OIL INSTEAD OF GREASE, YOU MUST USE AXLE TUBE SEAL TO PREVENT THE OIL FROM RUNNING INTO THE AXLE TUBES. THE PART NUMBERS ARE AS FOLLOWS

BRP 9397 FOR THE FRONT
BRP 9398 FOR THE REAR

ALWAYS USE SAE 80W/90 OR EQUIVALENT OIL IN HUBS. DO NOT OVER FILL.

FRONT AND REAR HUBS WILL TAKE 3.5 -4 OUNCES, SEE INSTRUCTION SHEET BELOW

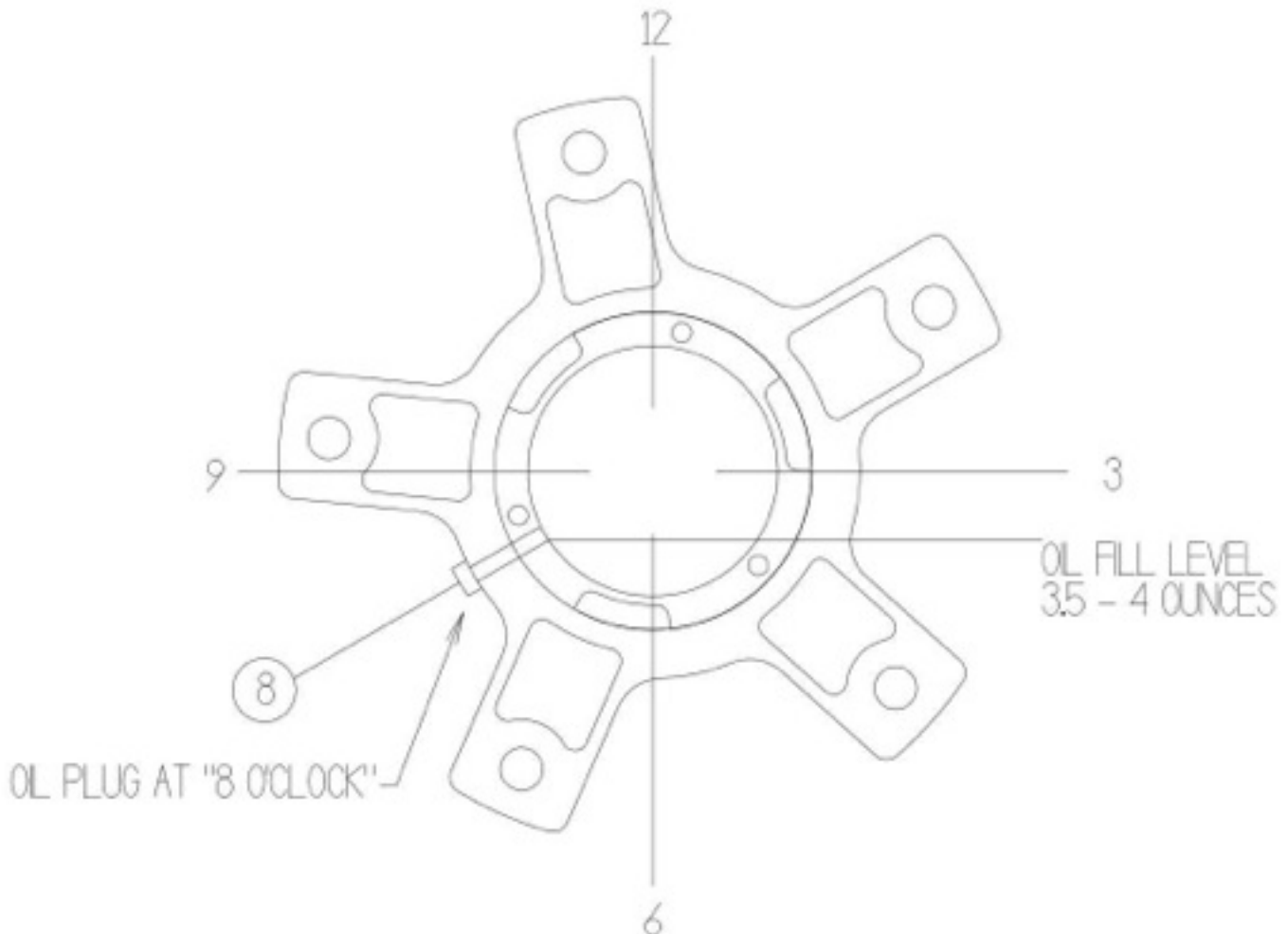
ALWAYS MAKE SURE TO KEEP THE GROOVES ON FLOATING ROTORS CLEAN

CHECK ALL SAFETY WIRED BOLTS WEEKLY

CHECK 3 OR 5 ROTOR ADAPTER TO HUB BOLTS WEEKLY



OIL FILL INSTRUCTION PICTURE BRP 9380, 9382, 9383



INSTALL REAR BRP 9398 INNER AXLE SEAL UNTIL IT BOTTOMS OUT IN THE TUBE
INSTALL FRONT BRP 9397 INNER SPINDLE SEAL UNTIL IT IS JUST INSIDE OF THE TUBE. DO NOT
PUSH IN TOO FAR OR IT WILL TAKE TOO MUCH OIL TO PROPERLY FILL YOUR HUB

TURN OIL FILL PLUG UP TO 12 O'CLOCK, POUR IN 3-1/2 TO 4 OUNCES OF OIL. GIVE IT A MOMENT
TO FLOW TO THE BOTTOM OF THE HUB. AT THIS TIME, TURN THE OIL FILL PLUG TO 8 O'CLOCK
(SEE PICTURE) AND LET THE EXCESS OIL DRAIN OUT. ONCE IT HAS DRAINED TO THAT LEVEL, TURN
PACK UP AND INSTALL CAP.

MAKE SURE TO CHECK OIL LEVEL WEEKLY



905.685.7223



716.285.7502

